



OYSTER
TOWERS

Who We Are

Veritasi Homes & Property is Africa's fastest-growing real estate development company, redefining luxury and innovation in the property industry. We create world-class, value-driven developments in prime locations, relentlessly focusing on customer satisfaction and excellence.

Our Core Values

Integrity	Customer Centricity	Innovation	Accountability
Delivering on our promises with transparency.	Putting clients at the heart of every project.	Pioneering modern designs and smart living solutions.	Ensuring long-term value and sustainable development.



Why Invest with Veritasi

Veritasi Homes and Properties limited is reshaping the entire landscape of the real estate industry. We are also geared towards establishing world class housing units in Nigeria.

Other reasons include:

- Our choice of prime locations appreciating asset.

- Modern, efficient and sustainable buildings.

- High level security protocols, well laid out Infrastructure and amenities.

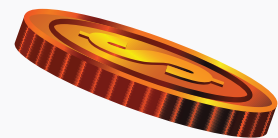
- Highly competitive prices and flexible payment plans.

- World class construction team.

- Developer's Integrity and Financial Prudence.

- Comprehensive Facility Management Services.

- Highly competitive prices and flexible payment plans.



EKO ATLANTIC WILL RIVAL THE WORLD'S MOST AMBITIOUS CITYSCAPES

Eko Atlantic City is a coastal city being built on Victoria Island in Lagos, Nigeria.

It is a focal point for investors, capitalising on rich development growth based on massive demand and a gateway to emerging markets of the continent.





WHY EKO ATLANTIC

Eko Atlantic is a self-sufficient, sustainable city designed to the highest modern standards. It offers 24/7 independent power, clean water, wastewater treatment, and underground drainage.

Each plot is connected with fiber optic communication, and elevated streets allow for basement parking above the water table. The city also features two large marinas linked by an internal waterway. With iconic developments like Eko Pearl and Azuri Tower, and the world's largest U.S. Consulate,

Eko Atlantic is fast becoming the ultra-modern city it set out to be.



ABOUT THE OYSTER APARTMENTS

The Oyster Towers is a high rise tower designed on 2,078sqm, in Eko Atlantic City. The City is situated in the heart of Lagos metropolis overlooking the Atlantic Ocean and surrounded by other impressive developments such as the Kuramo Building Residences (KBR housing Total staff), Eko Signature, Total Head Office etc.

The Oyster Towers is a breathtaking luxury apartments and penthouses that will feature fascinating bedrooms all en suite and a captivating facade owing to its beautiful flower bed scenery.

The project is in close proximity to the on going construction of the largest US Consulate General Office in the world.



WARRANTY

3 YEARS (ON ENTIRE UNITS) + **10 YEARS** (ON LEAKAGE)



HALL GYM



SPA



RESTAURANT



TENNIS COURT



ARCADE GAMES

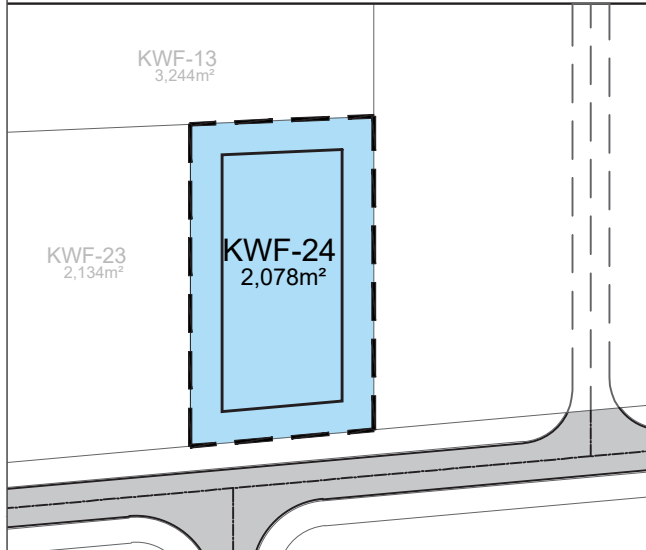


DEDICATED LIFT

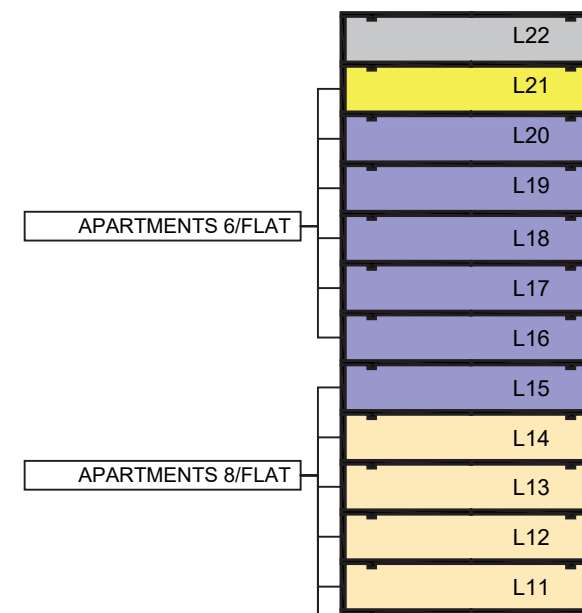


SWIMMING POOL

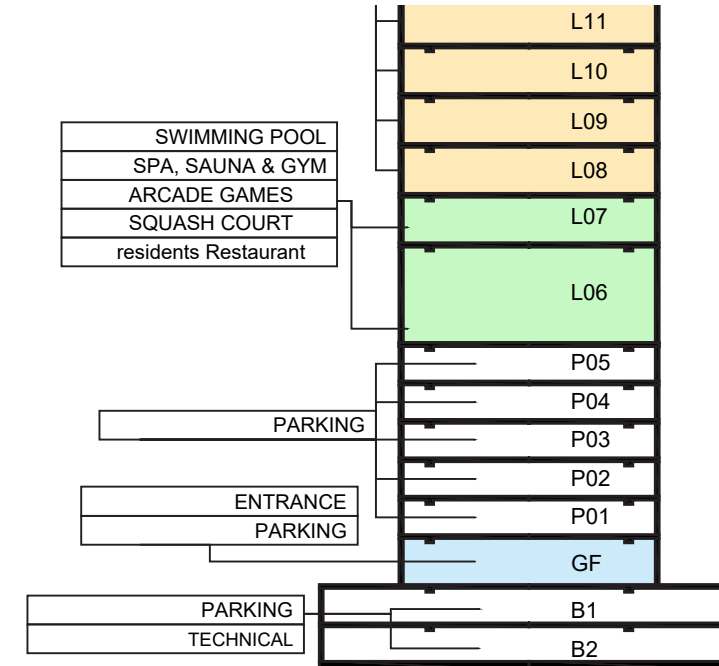
PLOT INFORMATION

	KWF-24 - PLOT AREA	2,078 m2
	Podium Setback	6 m all sides
	Tower Setback (Common / Road)	6m (Plot Below 2200 m2)
	Allowable Basement Area	1,868 m2
	Allowable Podium Area	1,085 m2
	Allowable Tower Area	1,085 m2
	TOTAL NUMBER OF CARS	184 CARS

FLOOR LEVEL	FLOOR DESCRIPTION	# Apartments	TOTAL AREA/ F
B2	Parking - Technical	0	1,868
B1	Parking - Technical	0	1,868
GF	Entrance, Technical & parkings	0	1,085
P01	Parking	0	1,085
P02	Parking	0	1,085
P03	Parking	0	1,085
P04	Parking	0	1,085
P05	Parking	0	1,085
L06	Leisure	0	1,060
L07	Leisure	0	1,060
L08	8 Apa (4 unit 3b- 2 unit 2b - 2 unit 1b)	8	1,000
L09	8 Apa (4 unit 3b- 2 unit 2b - 2 unit 1b)	8	1,000



L09	8 Apa (4 unit 3b- 2 unit 2b - 2 unit 1b)	8	1,000
L10	8 Apa (4 unit 3b- 2 unit 2b - 2 unit 1b)	8	1,000
L11	8 Apa (4 unit 3b- 2 unit 2b - 2 unit 1b)	8	1,000
L12	8 Apa (4 unit 3b- 2 unit 2b - 2 unit 1b)	8	1,000
L13	8 Apa (4 unit 3b- 2 unit 2b - 2 unit 1b)	8	1,000
L14	8 Apa (4 unit 3b- 2 unit 2b - 2 unit 1b)	8	1,000
L15	4 Apa (2 unit 3b- 2 unit 4b)	4	1,000
L16	4 Apa (2 unit 3b- 2 unit 4b)	4	1,000
L17	4 Apa (2 unit 3b- 2 unit 4b)	4	1,000
L18	4 Apa (2 unit 3b- 2 unit 4b)	4	1,000
L19	4 Apa (2 unit 3b- 2 unit 4b)	4	1,000
L20	4 Apa (2 unit 3b- 2 unit 4b)	4	1,000
L21	2 Penthouses	2	1,000
L22	roof	0	200
Sum OF Quantities - built up		82	25,480



%	APARTMENT DESCRIPTION	# Apartments	AREA/ ap
17.07%	1 Bedroom Apartment	14	84 m2
17.07%	2 Bedrooms Apartment	14	99 m2
34.14%	3 Bedrooms small Apartment	28	≈154 m2
14.63 %	3 Bedrooms big Apartment	12	≈230 m2
14.63 %	4 Bedrooms Apartment	12	≈270 m2
2.44 %	Penthouse	2	≈500 m2

Client:
KODAI

PROJECT:
KWF-24 EKO ATLANTIC

Drawing Title:
AREA CALCUALTION

Scale:
N.T.S.

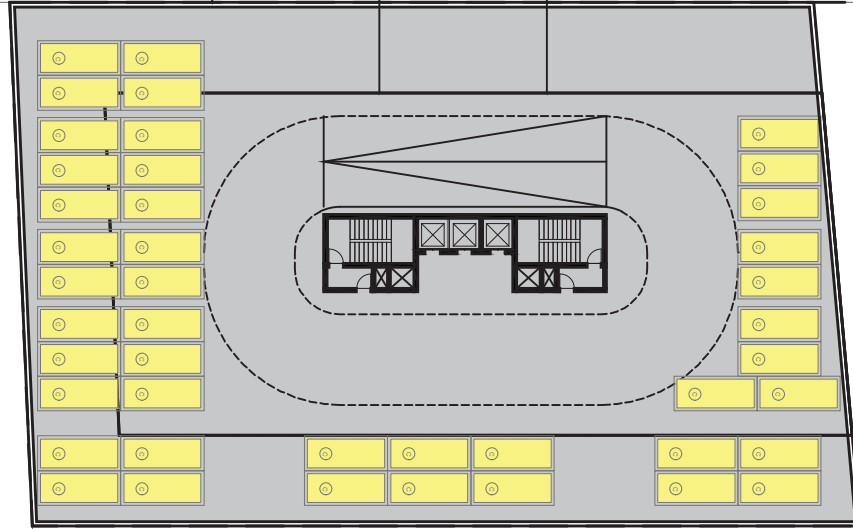
A-010

BASEMENT 1 & 2

KURAMO WATERS

KWF-13
3,244m²

KWF-24-LIMITS Setback-Podium Setback-tower



KWF-23
2,134m²

SEA SIDE

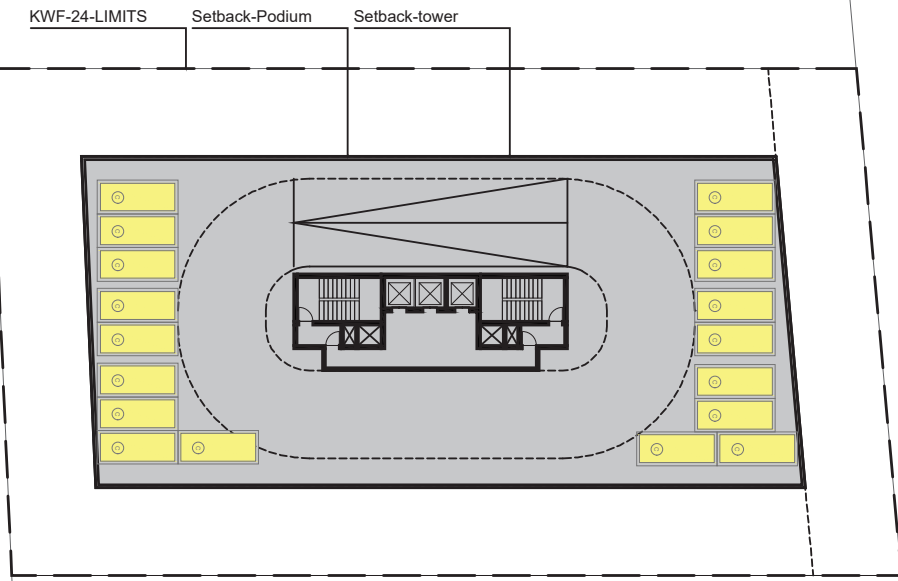
PODIUM FLOOR X 5

KURAMO WATERS

SEA SIDE

KWF-13
3,244m²

KWF-23
2,134m²



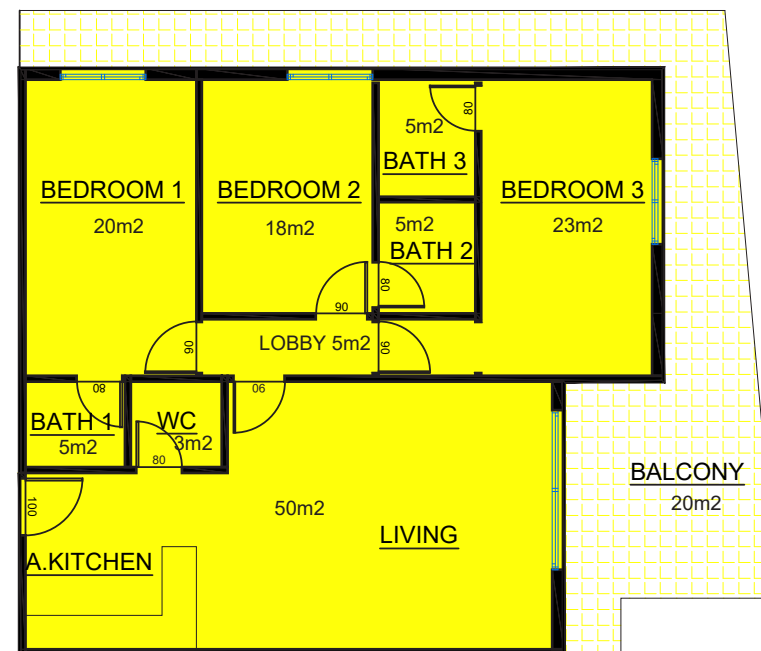
Client:
KODAI
PROJECT:
KWF-24 EKO ATLANTIC

Drawing Title:
PARKINGS CONCEPTUAL
LAYOUTS
Scale:
N.T.S.

A-020

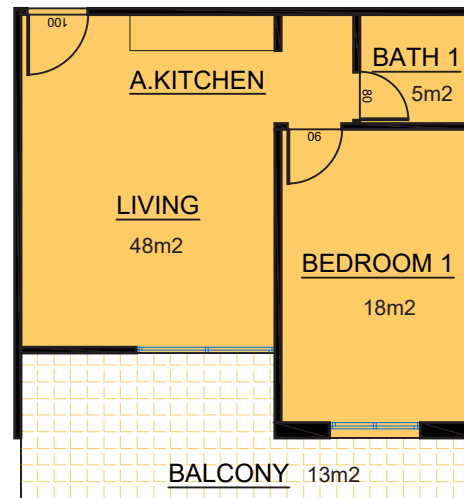


LOWER TYPICAL FLOOR - 7 floors

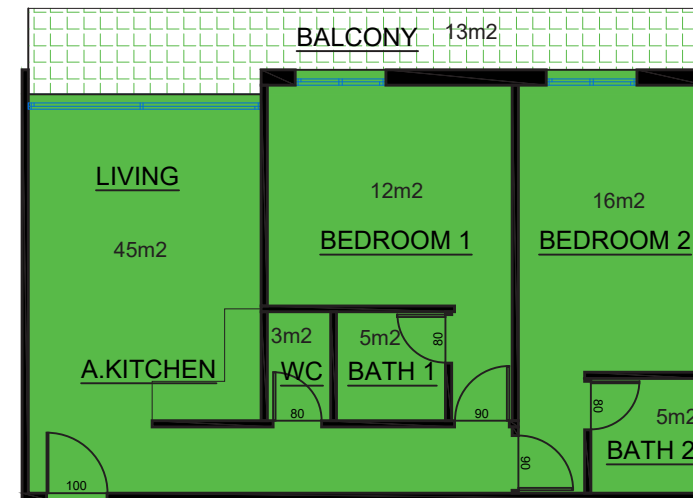


3 Bedrooms small Apartment - AREA ≈ 154 m²

3 Bedrooms small Apartment - AREA ≈ 154 m2



1 Bedroom Apartment - AREA ≈ 84 m2

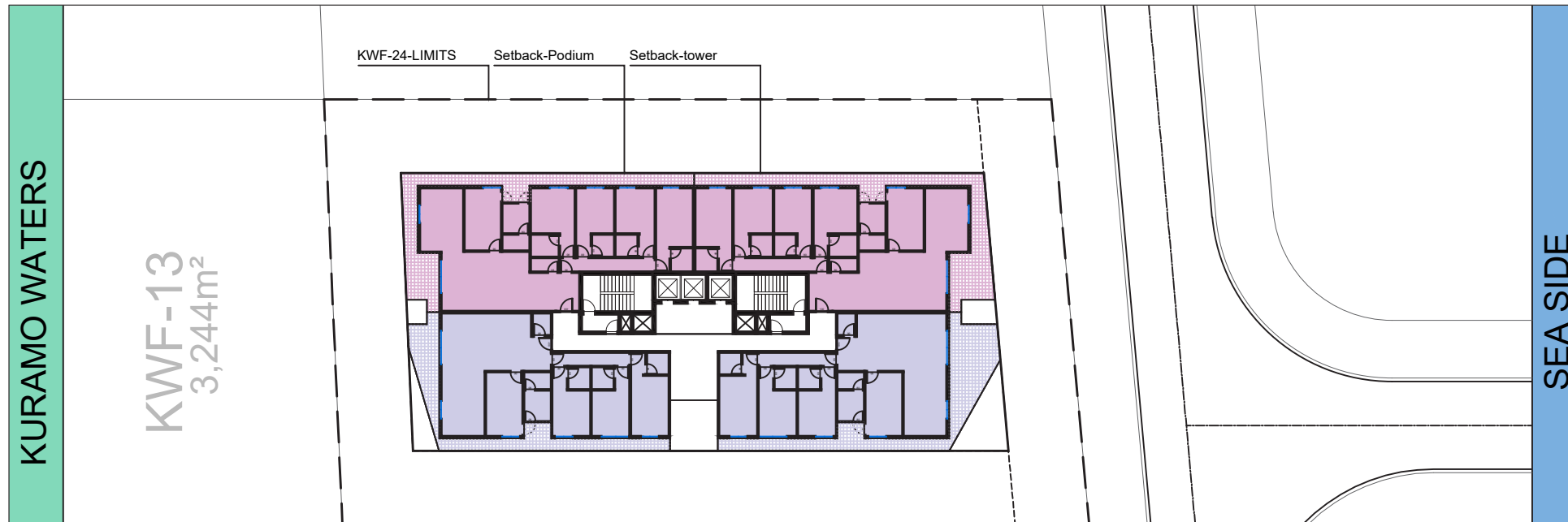


2 Bedrooms Apartment - AREA ≈ 99 m2

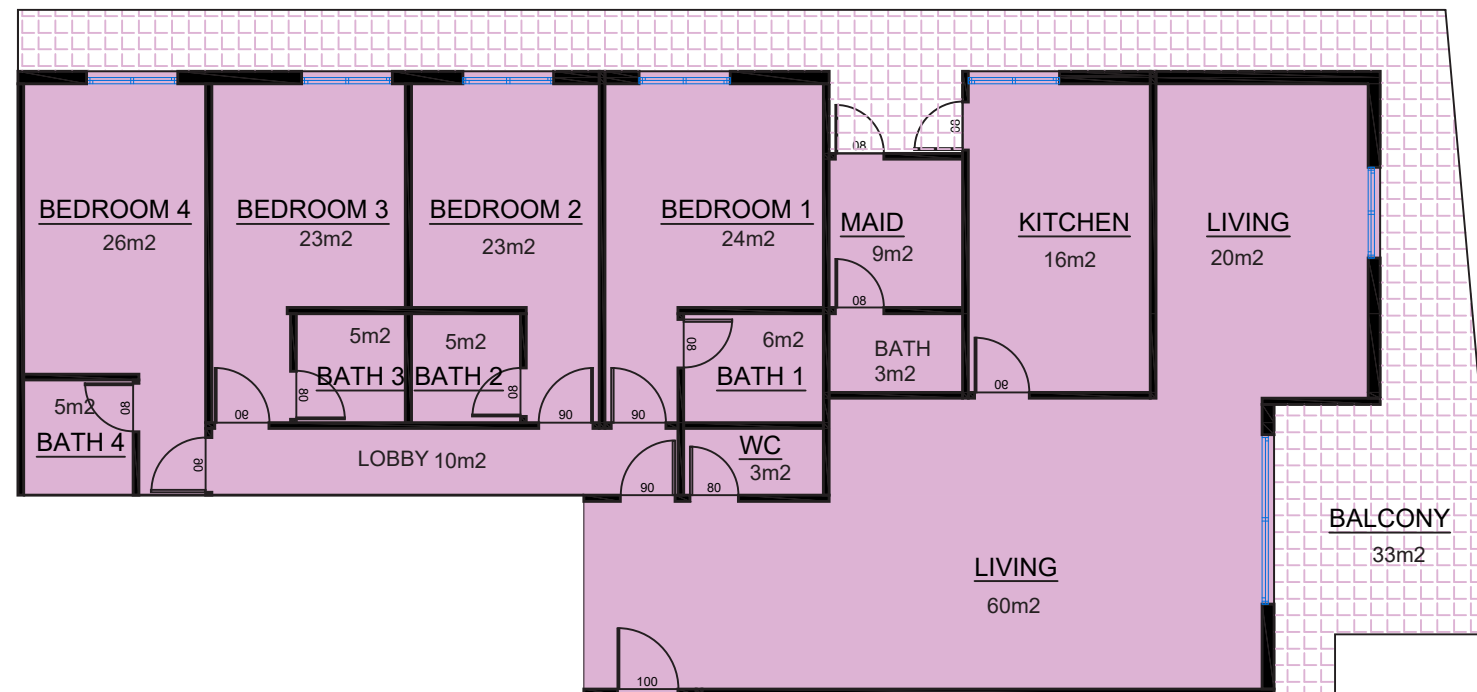
Client:
KODAI
PROJECT:
KWF-24 EKO ATLANTIC

Drawing Title:
TYPICAL LOWER FLOOR
LAYOUT
Scale:
N.T.S.

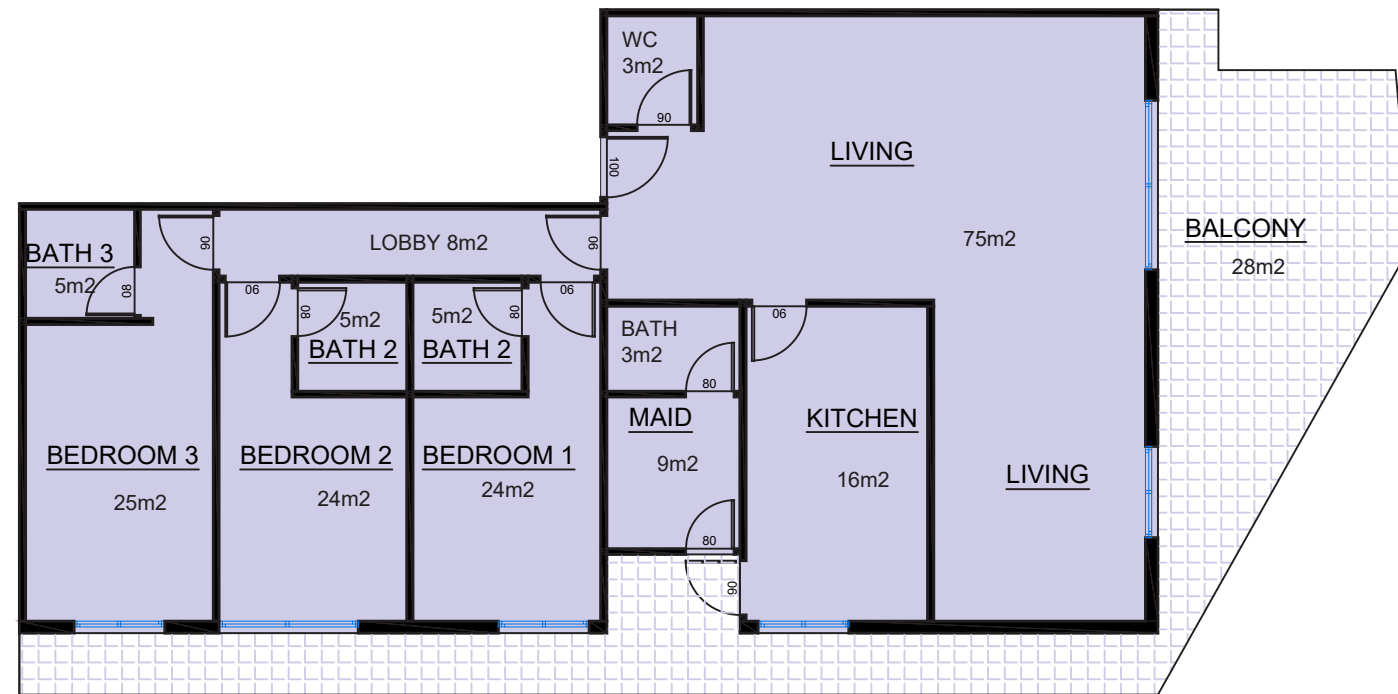
A-030



UPPER TYPICAL FLOOR - 6 floors



4 Bedrooms Apartment - AREA ≈ 270 m²

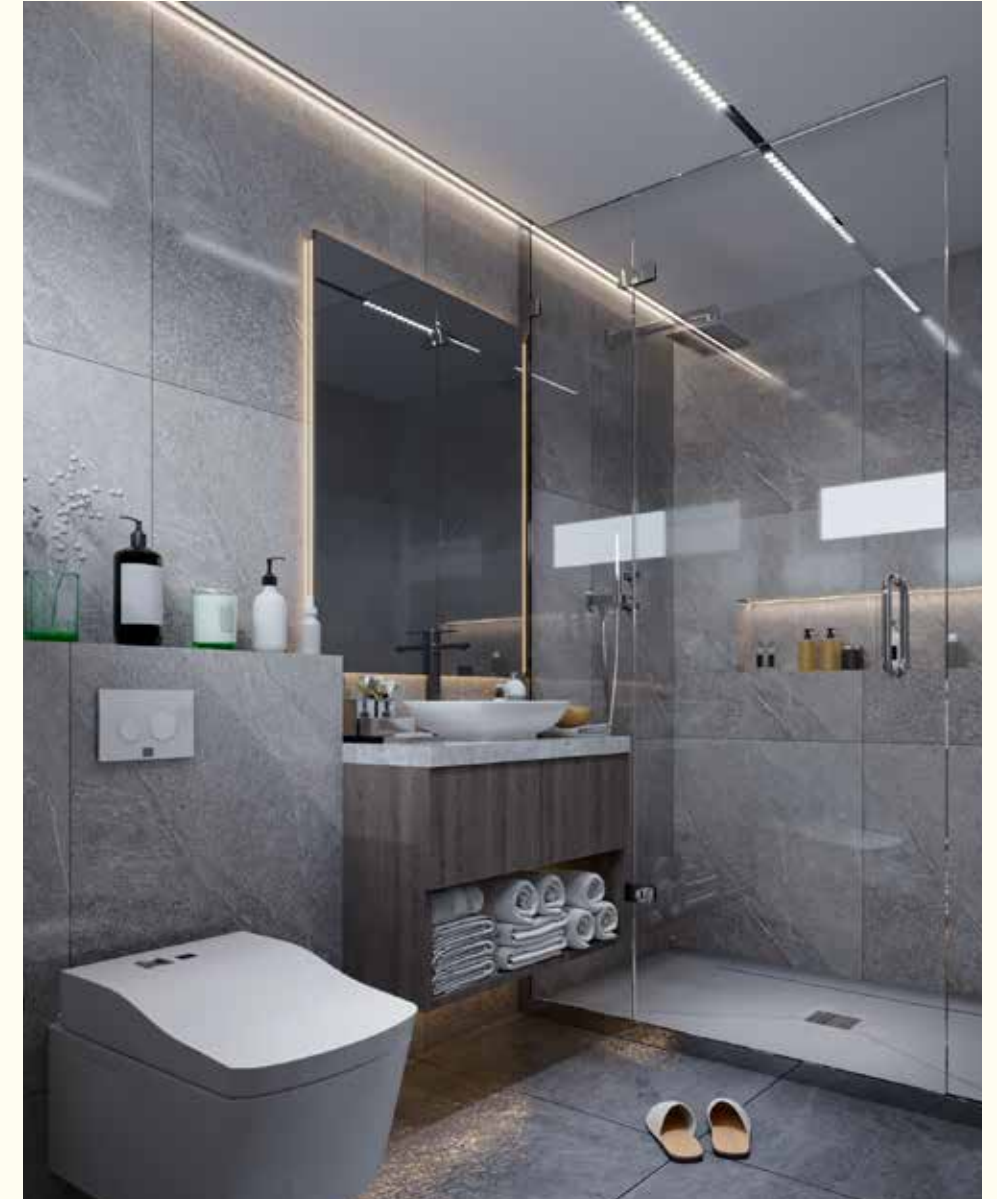


3 Bedrooms Big Apartment - AREA ≈ 230 m²

Client:
KODAI
 PROJECT:
KWF-24 EKO ATLANTIC

Drawing Title:
 TYPICAL LOWER FLOOR
 LAYOUT
 Scale:
 N.T.S.

A-040



Step into interiors crafted for those who appreciate refinement. Every finish, texture, and detail within Oyster Towers is designed to elevate your daily living into an experience of pure luxury.

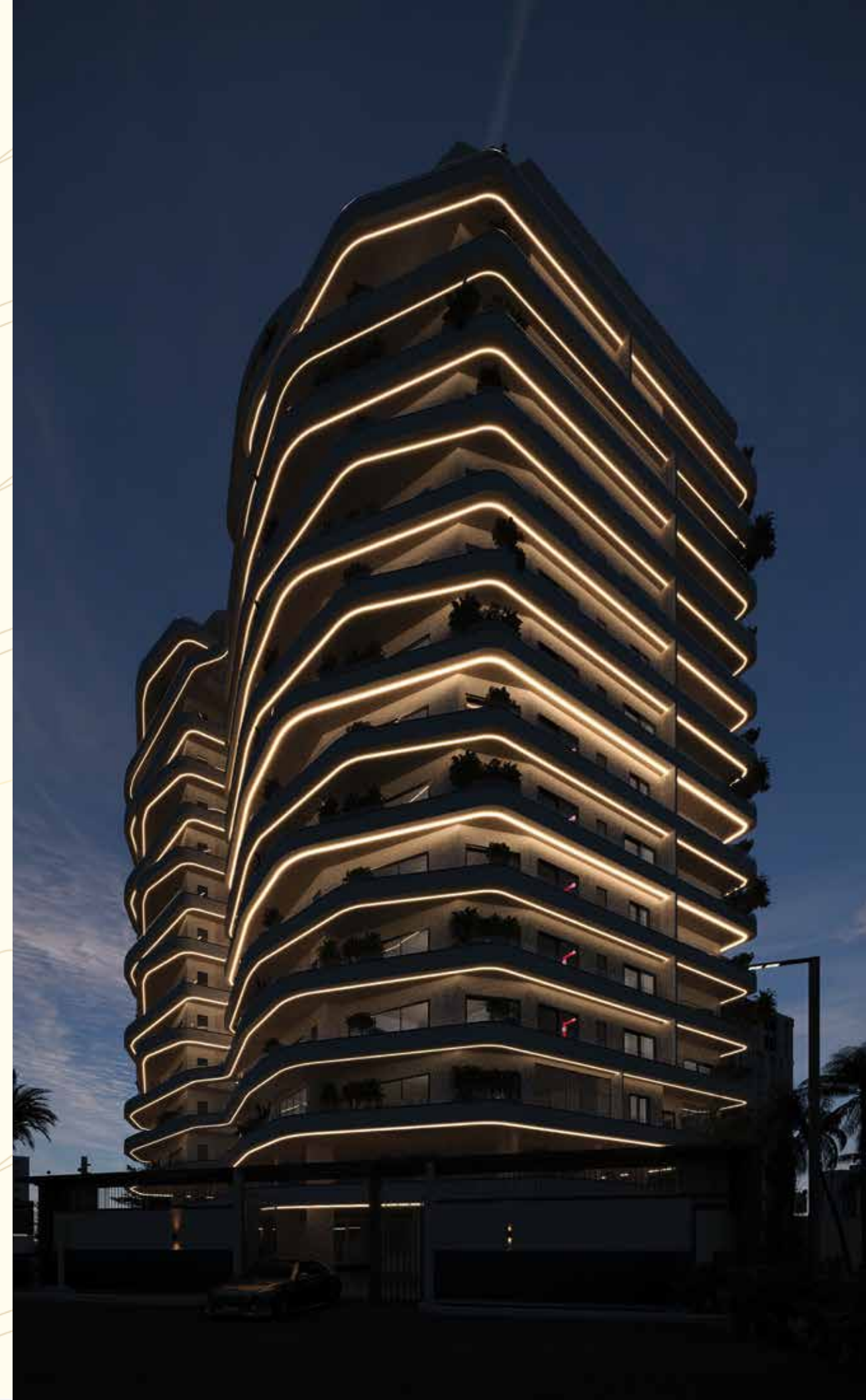


ONGOING PROJECTS

TINUOLA TOWERS, BANANA ISLAND

After successfully delivering some of the most iconic development, Veritasi Homes proudly presents Tinuola Towers- a master-fully designed luxury residence that redefines high-end living.

A 15-floor architectural masterpiece, Tinuola Towers features 28 Limited Edition Apartments, including 4 breathtaking penthouses, meticulously crafted for sophisticated investors and elite homeowners.



ONGOING PROJECTS

MALIBU HILLS, ASOKORO

Veritasi Homes proudly unveils Malibu Hills, where elegance meets elevation. Nestled in the prestigious Asokoro district, Malibu Hills is a statement of refined living. From limited edition apartments to masterfully crafted villas, every detail is designed for the discerning few.

85 Exclusive Units - 40 4Bedroom Apartments + 5 Penthouses, 16 3Bedroom Apartments + 2 Penthouses, 22 Luxurious Duplexes.

Live above the ordinary. Live Malibu Hills.



FREQUENTLY ASKED QUESTIONS

FAQ

Who bears the cost of the land?

- The developer is supplying the land (measuring 2,078 square meters).

What is the project's estimated timeline?

- The development is projected to last 3 years.

Is there a specific account designated for all payments?

- All payments will be made to the Cooplag bank account.

What document will buyers receive for land ownership?

- Buyers will be issued a deed of assignment/allocation, which will reference the Governor's approval.

How will the flats be distributed to buyers?

- Allocation will follow a first-come, first-served system.

How many parking spots are allocated per unit?

- One Bedroom - 1 Parking Spot
Two and Three Bedroom - 2 Parking Spots
Four Bedroom - 3 Parking Spots

What leisure and infrastructure amenities will be included?

- Facilities will include a swimming pool, a fully equipped gym, lounge seating areas, and a sauna/spa.

Will exchange rate fluctuations affect the project?

- No, there will be no impact. The project is covered by a ZERO VARIATION agreement and priced in US Dollars (\$).

Get In Touch

8B, Femi Pedro Street, Parkview Estate, Ikoyi, Lagos.

 veritasihomes | www.veritasihomes.com

A Development by

VERITASI
HOMES

