



INTRODUCING

Camberwall Courts, Abijo is an Urban apartment development designed to reflect the magical merge of form and function in its architecture. Its design caters to modern living for residents of the apartments. Located in the heart of Abijo GRA along the Lekki-Epe Expressway, the estate is a masterpiece.

It features a splendid layout, visitors park, smart card access, renewable energy and surveillance.

ABOUT

MODERN LIVING

Stylish and functional, the space around reflects our design thinking approach to ensure access, security and serenity of the environment.

Charming smart spaces focusing on the smallest details to ensure timeless beauty and ultimate comfort in your future home. Here, you'll live life the easy way.



A SAFE COMMUNITY

We are committed to building a safe community and in doing so, we continue building our rich family culture that's every bit as passionate, inspiring and vibrant as the smart communities we create and serve.

WHY

CAMBERWALL COURT ABIJO?

RENTAL INCOME

What better way to earn income hassle-free? Veritasi Homes' facility management arm will manage the apartments on behalf of clients and collect rents from tenants in a timely manner. This option will enable you earn conveniently from the apartment bought.

MORTGAGE

Veritasi Homes will also provide access to mortgage facilities to enable you own a home. The mortgage accessed at a single digit interest rate is available up to 30 years. With equity contribution ranging from 10-30%, you can spread the balance as you please.

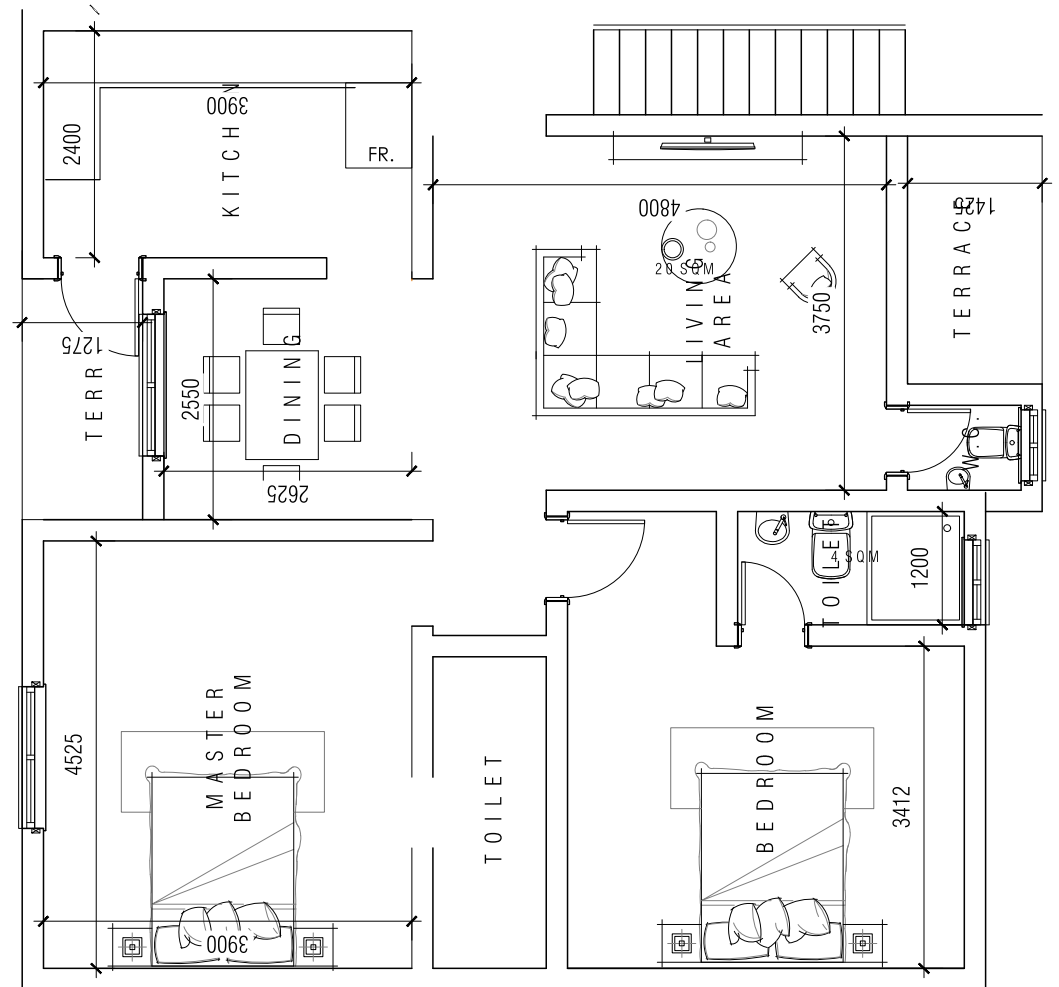




2 BEDROOM APARTMENT

AREA

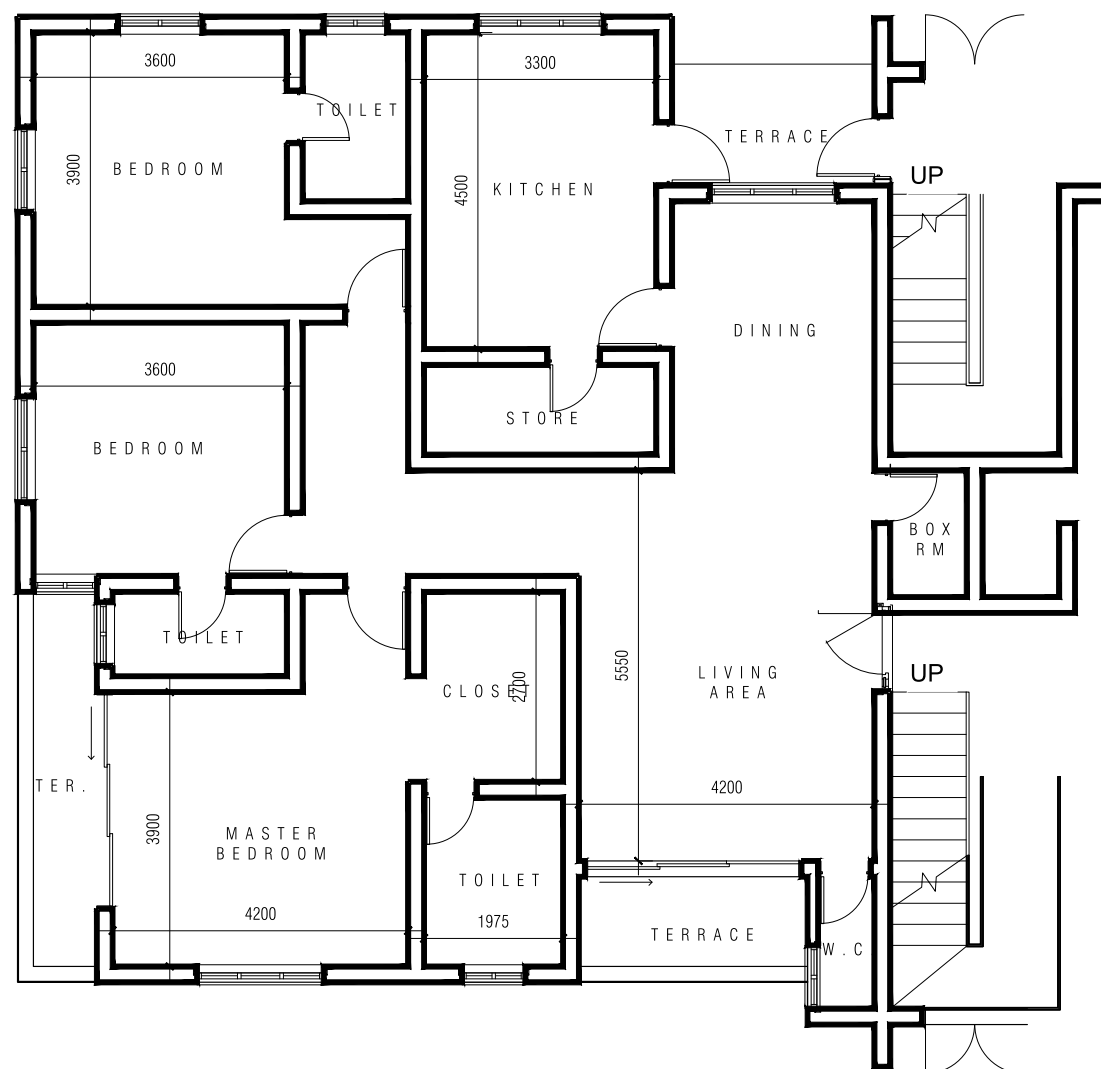
KITCHEN	9.36SQM
LIVING ROOM & DINING	24.71SQM
MASTER BEDROOM	17.67SQM
BATHROOM(MASTER BEDROOM)	4.09SQM
BEDROOM	16.37SQM
BATHROOM(BEDROOM)	4.00SQM
VISITOR'S TOILET	1.62SQM
TERRACE(MASTER BEDROOM)	3.25SQM
TERRACE(LIVING ROOM & DINING)	1.43SQM
TOTAL AREA:	82.49SQM



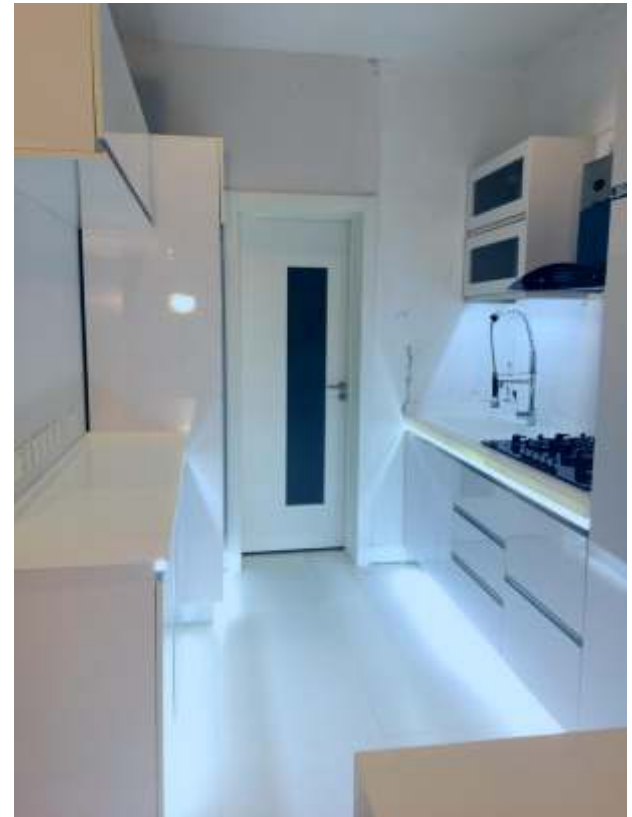
3 BEDROOM APARTMENT

AREA

KITCHEN	14.85SQM
STORE	3.63SQM
LIVING ROOM & DINING	34.69SQM
MASTER BEDROOM & CLOSET	23.53SQM
BEDROOM	114.04SQM
BATHROOM(BEDROOM)	4.00SQM
BEDROOM II	14.04SQM
BATHROOM(BEDROOM II)	4.00SQM
VISITOR'S TOILET	1.62SQM
TERRACE(MASTER BEDROOM)	3.06SQM
TERRACE(LIVING ROOM & DINING)	3.15SQM
VISITOR'S TOILET	1.08SQM
BOX ROOM	
TOTAL AREA:	121.68SQM



2 BEDROOM APARTMENT (INTERIOR)



3 BEDROOM TERRACES + BQ

FIRST FLOOR & GROUND FLOOR

AREA

LIVING ROOM & DINING	38.00SQM
KITCHEN & STORE	15.80SQM
BQ	7.50SQM
BATHROOM (BQ)	2.16SQM
BEDROOM I	15.20SQM
BATHROOM(BEDROOM)	3.36SQM
BEDROOM II	13.50SQM
BATHROOM(BEDROOM II)	3.08SQM
MASTER BEDROOM & CLOSET	29.40SQM
BATHROOM (MASTER BEDROOM)	5.00SQM
TOTAL AREA:	133.00



THREE

BEDROOM TERRACES + BQ



4 BEDROOM SEMI-DETACHED + BQ

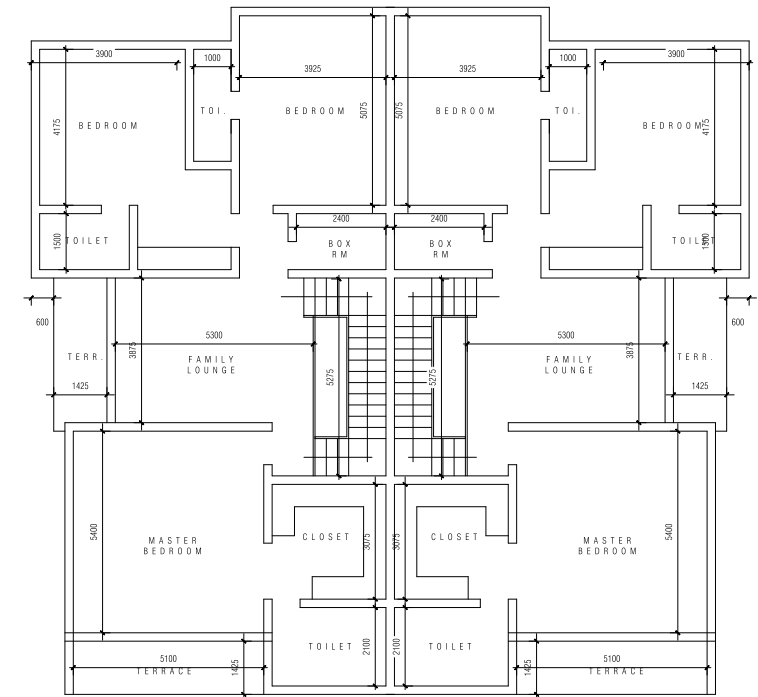
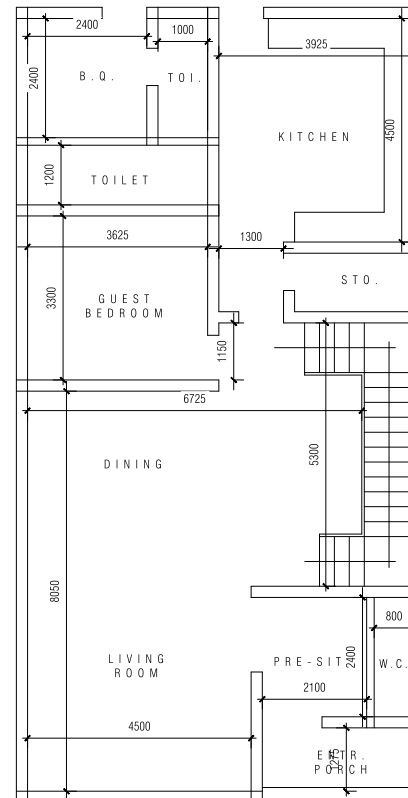
GROUND FLOOR & UPPER FLOOR

AREA

PRE SIT, LIVING ROOM & DINING	62.09SQM
VISITOR'S TOILET	1.92SQM
KITCHEN & STORE	20.66SQM
BQ	5.76SQM
BATHROOM (BQ)	2.40SQM
GUEST BEDROOM	11.98SQM
BATHROOM(GUEST BEDROOM)	4.36SQM
BEDROOM I	19.96SQM
BATHROOM(BEDROOM I)	2.40SQM
BEDROOM II	19.98SQM
BATHROOM(BEDROOM II)	3.68SQM
FAMILY LOUNGE	20.56SQM
MASTER BEDROOM & CLOSET	35.86SQM
BATHROOM (MASTER BEDROOM)	5.04SQM
BOX ROOM	3.60SQM
TERRACE (MASTERBEDROOM)	7.29SQM
TERRACE (FAMILY LOUNGE)	5.55SQM

TOTAL AREA:

N233.09

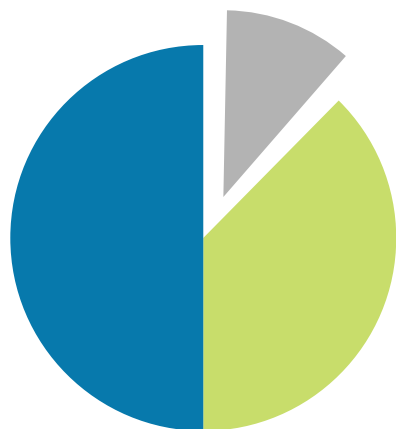


FOUR

BEDROOM SEMI-DETACHED + BQ



PAYMENT PLAN OPTION 1



■ 0-3 MONTHS

■ 4-6 MONTHS

■ 7-12 MONTHS

PAYMENT PLAN OPTION 2

MORTGAGE

NHF - Hassle Free Mortgage application.
Repayment period - up to 30 years.

(Apply to 2 Bedroom Apartments Only)

PRICE

<p>N21M</p> <p>2 BEDROOM APARTMENT</p> <hr/> <p>INITIAL DEPOSIT N4MILLION</p>	<p>N27M</p> <p>3 BEDROOM APARTMENT</p> <hr/> <p>INITIAL DEPOSIT N4MILLION</p>
--	--

Sold out



PRICE

N45M

**4 BEDROOM
SEMI-DETACHED + BQ**

**INITIAL DEPOSIT
N4 MILLION**

N34M

**3 BEDROOM
TERRACES + BQ**

**INITIAL DEPOSIT
N4 MILLION**



INTRODUCING

BUNGALOW

+ BQ

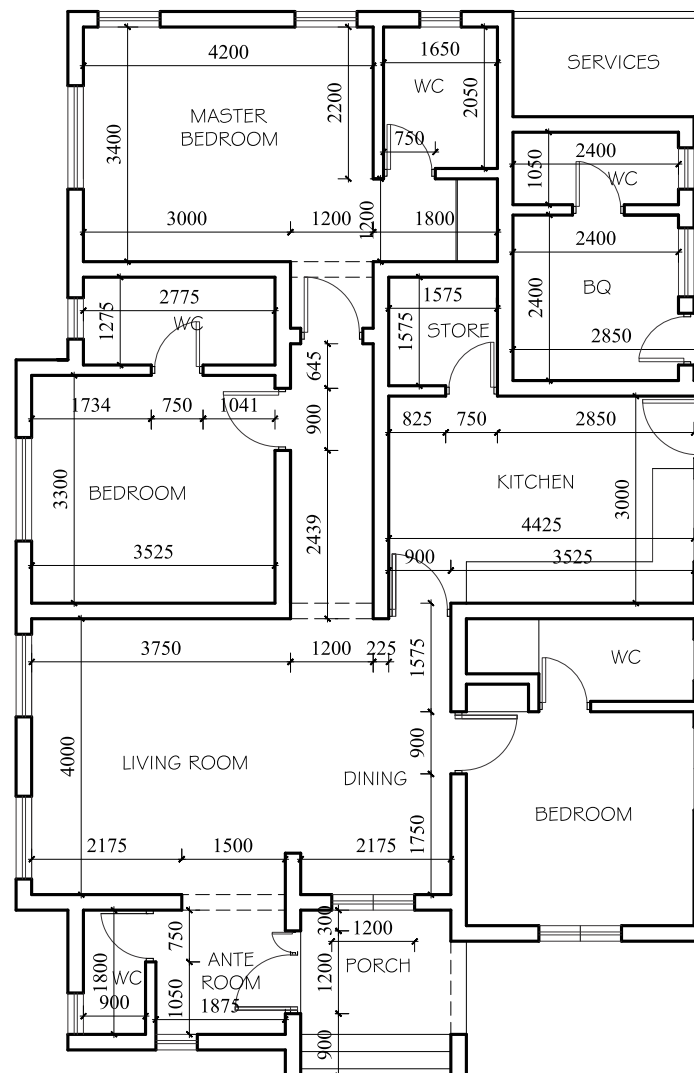


CAMBERWALL COURT, ABIJOGRA, PHASE 2

3 BEDROOM BUNGALOW + BQ

AREA

ANTE ROOM, LIVING ROOM & DINING	32.49SQM
KITCHEN & STORE	15.79SQM
BEDROOM I	11.65SQM
BATHROOM (BEDROOM I)	2.28SQM
BEDROOM II	10.49SQM
BATHROOM(BEDROOMII)	3.96SQM
MASTER BEDROOM	16.44SQM
BATHROOM(MASTER BEDROOM)	3.38SQM
BQ	5.76SQM
BATHROOM (BQ BEDROOM)	2.52SQM
PORCH	5.23SQM
VISITORS' TOILET	1.62SQM
SERVICES	4.36SQM
TOTAL AREA:	115.97SQM



PRICE

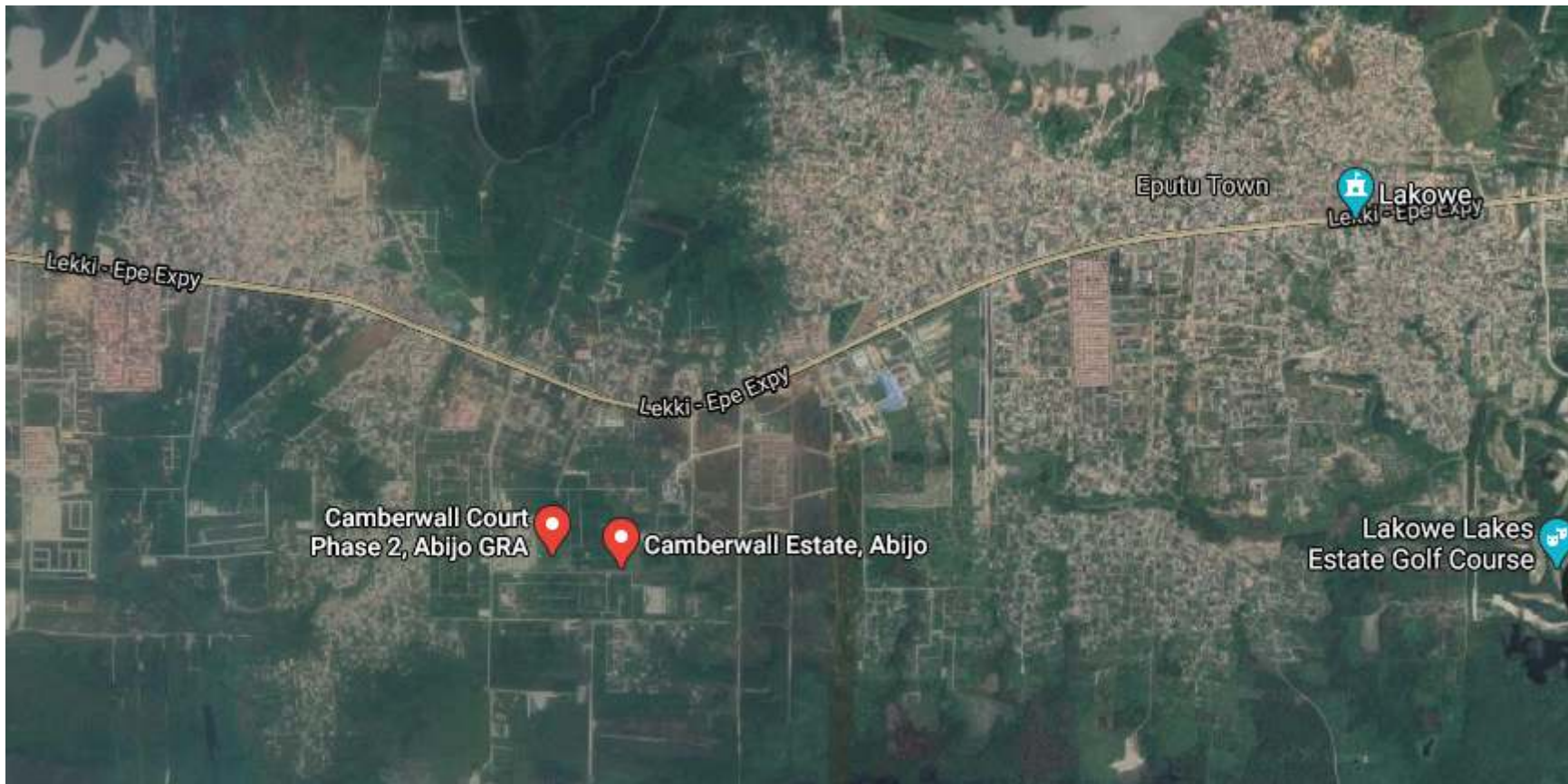
Sold out

N33M

**3 BEDROOM
BUNGALOW + BQ**

**INITIAL DEPOSIT
N4 MILLION**





This brochure is meant only for promotional purposes and has no legal value. The plans, specifications, images and other details herein are only indicative and subject to the approval of the concerned authorities.



@veritasihomes



@veritasihomes



VeritasiHomes



Veritasihomes.com

OTHER PROJECTS:

THE CLARIDGE I, SANGOTEDO

CAMBERWALL ESTATE, ABIJO GRA

THE CLARIDGE II, IBEJU LEKKI

CAMBERWALL COURT, ABIJO GRA 1 & 2

CAMBERWALL ADVANTAGE, IKATE 1 & 2

CONTACT US:

www.veritasihomes.com